

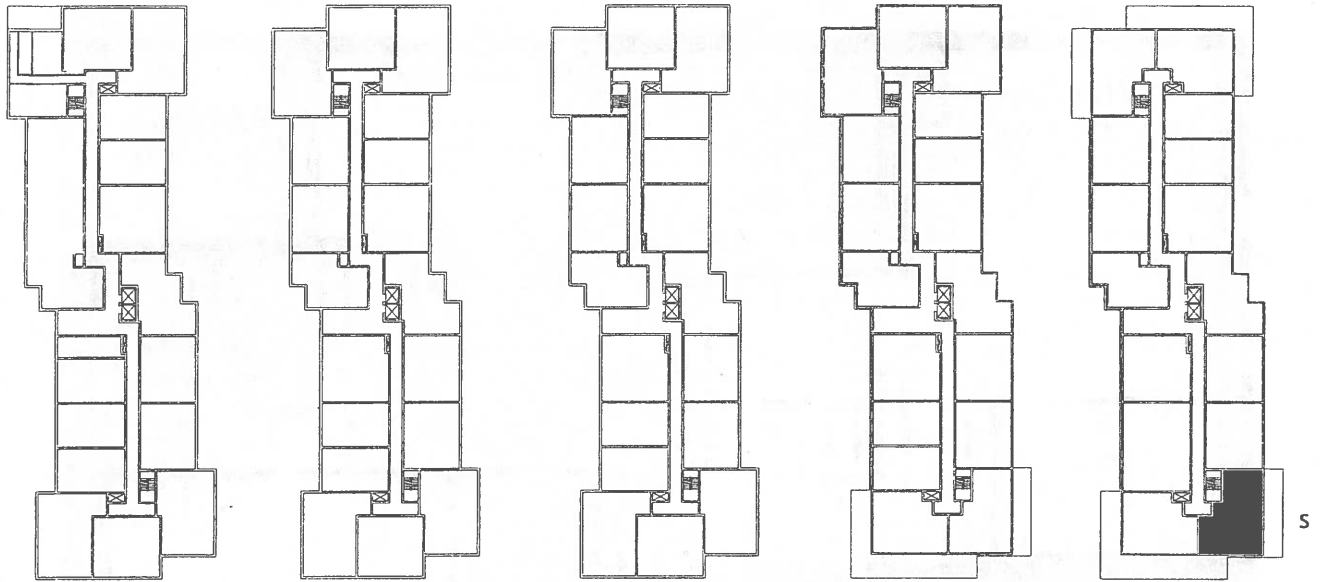
**SUITE FEATURES:**

- spacious living/dining room with access to solarium
- large master bedroom with ensuite bath and walk-in closet
- large kitchen with window
- storage with rough-in plumbing for optional stacked washer and dryer
- convenient second bath with large walk-in shower

**THE TERRACES AT HERITAGE SQUARE**

*Vespra Suite*

Two Bedroom + Den - 1,128 sq.ft.



GROUND

SECOND

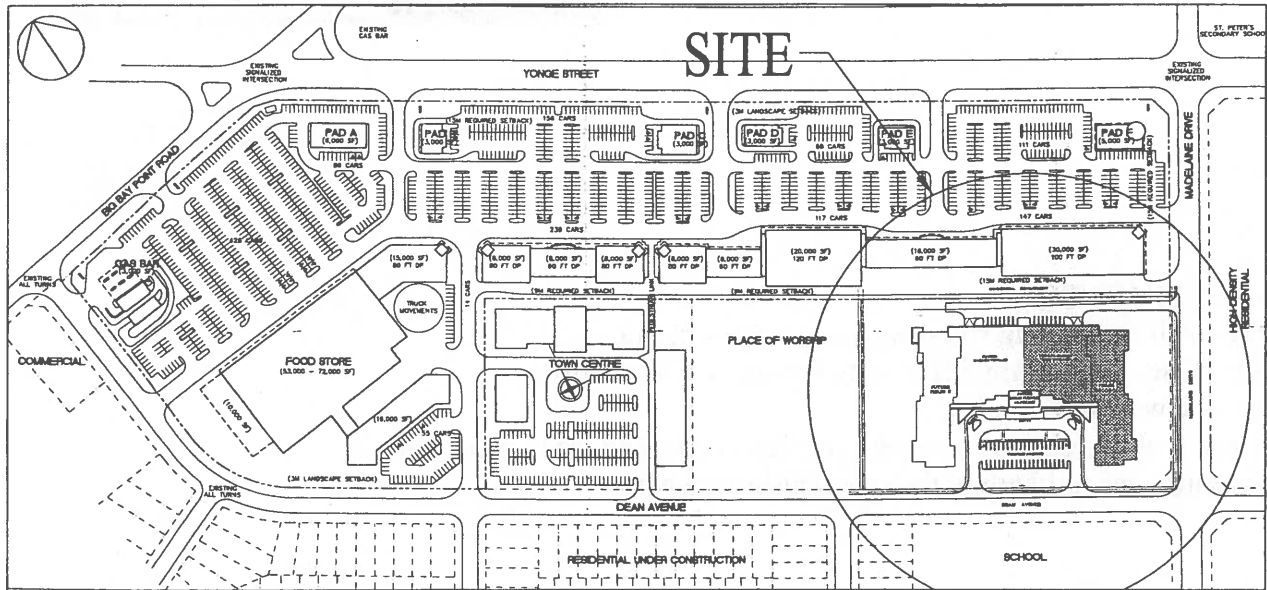
THIRD

FOURTH

FIFTH

LEGEND: B - BALCONY, S - SOLARIUM, P - PATIO, T - TERRACE

FLOOR PLANS



THE TERRACES AT HERITAGE SQUARE

Vespra Suite

Joseph Bogdan Associates Inc. / Ian Malcolm Architects

Two Bedroom + Den

